



Pre

Tuner[™] USER'S MANUAL

Preliminary

Preliminary

®

IMPORTANT NOTICE - PLEASE READ FIRST

THIS SOFTWARE IS USED AT YOUR OWN RISK. IMPROPER USE OF THIS SOFTWARE MAY RESULT IN IMPROPER FUNCTIONING OF A MODULE. THE USER IS SOLELY RESPONSIBLE FOR THE RESULTS OF ANY USE OF THE SOFTWARE. HED MAKES NO REPRESENTATIONS OR WARRANTIES OF ANY KIND, EXPRESS OR IMPLIED, WITH REGARD TO THE SOFTWARE, ITS USE, OR ANY RESULT THAT MAY BE OBTAINED THROUGH ITS USE. USE OF THE SOFTWARE REQUIRES PROFESSIONAL JUDGMENT AND IT IS SOLELY THE USER'S RESPONSIBILITY TO ASSESS THE APPROPRIATENESS OF ANY APPLICATION OF THE SOFTWARE. HED WILL NOT BE LIABLE TO THE USER OR ANY THIRD PARTY FOR ANY DAMAGES OF ANY KIND, DIRECT, CONSEQUENTIAL OR OTHERWISE, REGARDLESS OF THE LEGAL THEORY, ARISING FROM OR ASSOCIATED WITH THE SOFTWARE OR ITS USE.

DISCLAIMER OF WARRANTY.

LIMITATION OF LIABILITY. UNDER NO CIRCUMSTANCES AND UNDER NO LEGAL THEORY, TORT, CONTRACT, OR OTHERWISE, SHALL VENDOR OR ITS LICENSORS BE LIABLE TO YOU OR ANY OTHER PERSON FOR (AND VENDOR HEREBY EXPRESSLY DISCLAIMS ANY AND ALL LIABILITY FOR) ANY INDIRECT, SPECIAL, PUNITIVE, INCIDENTAL, OR CONSEQUENTIAL DAMAGES OF ANY CHARACTER INCLUDING, WITHOUT LIMITATION, DAMAGES FOR WORK STOPPAGE, COMPUTER FAILURE OR LOSS OF REVENUES, PROFITS, GOODWILL, USE, DATA OR OTHER INTANGIBLE OR ECONOMIC LOSSES. IN NO EVENT WILL VENDOR OR ITS LICENSORS BE LIABLE FOR ANY DAMAGES IN EXCESS OF THE AMOUNT PAID TO LICENSE THE SOFTWARE, EVEN IF YOU OR ANY OTHER PARTY SHALL HAVE INFORMED VENDOR OR ITS LICENSORS OF THE POSSIBILITY OF SUCH DAMAGES, OR FOR ANY CLAIM. NO CLAIM, REGARDLESS OF FORM, MAY BE MADE OR ACTION BROUGHT BY YOU MORE THAN ONE (1) YEAR AFTER THE BASIS FOR THE CLAIM BECOMES KNOWN TO THE PARTY ASSERTING IT.

INDEMNIFICATION.

FULL TEXT OF THE CANLink® Composer™™ LICENSE IS INCLUDED WITH THE SOFTWARE



Table of Contents

Table of Contents	4
1.0 Introduction.....	5
2.0 Dongles	5
3.0 General Information.....	5
4.0 Connecting.....	6
4.1 Selecting a Database file.....	6
4.2 Passwords.....	7
4.3 Selecting a Station File.....	7
4.4 Data Entry Window.....	8
4.5 Selecting a Process.....	8
4.6 Tuner Screen.....	9
4.7 Processes Complete.....	10

Preliminary

1.0 Introduction

Orchestra's Tuner™ is a software tool for providing step-by-step instructions for vehicle setup, calibration, trouble shooting, etc.

2.0 Dongles

Any of the Dongles may be used to run Tuner, but only certain level of dongle and password combination can execute/bypass certain Processes. These settings are determined by the application developer.

3.0 General Information

Database


In order to execute Processes in Tuner, a Database (.cdb) for the Project is required. Once connected to a Module, the filename required will be displayed.

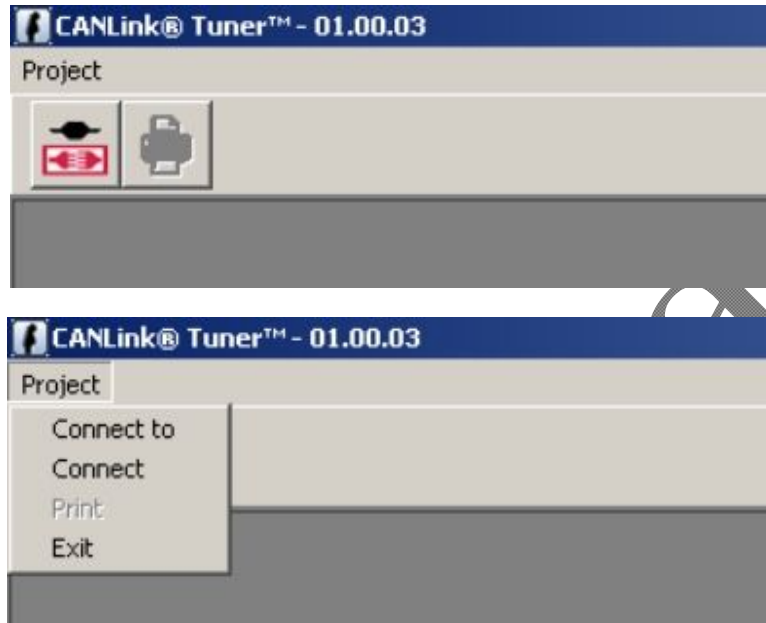
Safe Mode

Safe Mode is a predefined state for all the outputs in a system. If text on the Main Window states "Press Space Bar – for Safe Mode – **Enabled**", then pressing the Space Bar on the keyboard will set the System to Safe Mode and halt the current Action. If text on the Main Window states "Press Space Bar – for Safe Mode – **Disabled**", then pressing Space Bar will not put the system into Safe Mode.



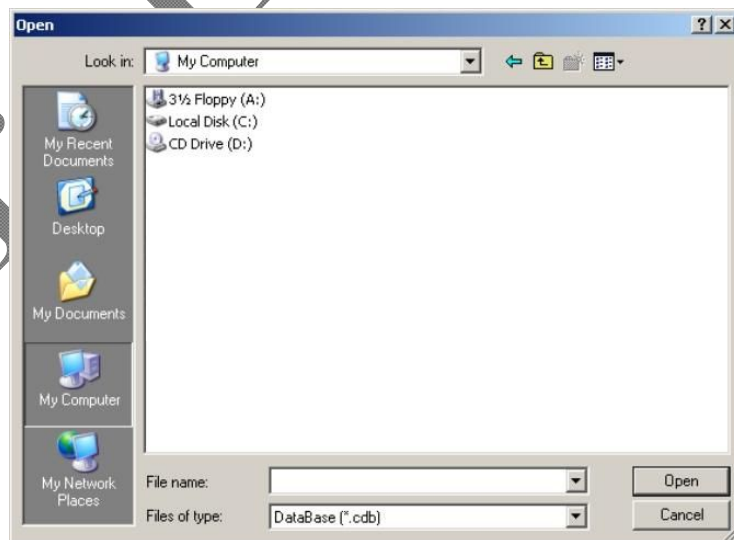
4.0 Connecting

To connect to the CANLink Master Module open Tuner and press the icon  or under the ‘Project’ menu– click ‘Connect’. To change Comm Port selection, click ‘Connect to’ under the ‘Project’ menu.



4.1 Selecting a Database file

Once connected to a Module, the filename required will be displayed in a File Open dialog box. Locate this Database file and select it. Since the file is required, clicking Cancel will exit the program



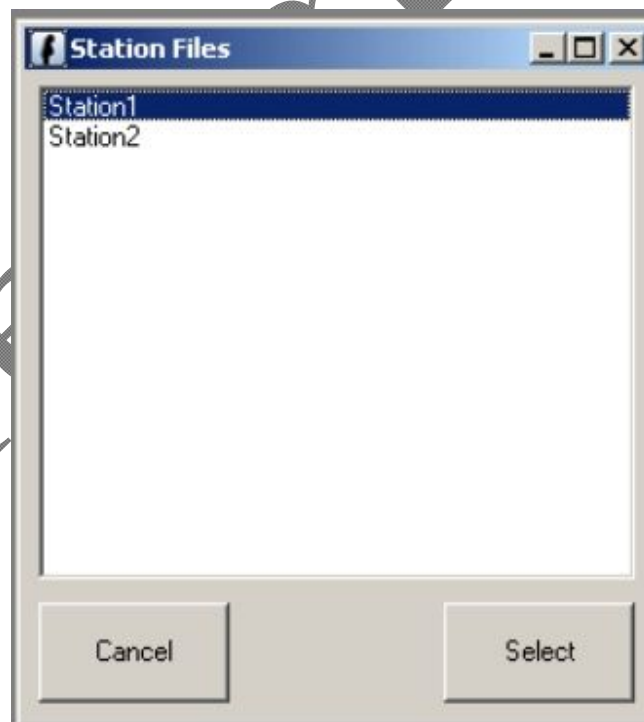
4.2 Passwords

For security purposes, please enter in the provided password at the Password prompt screen. This is the main password required for obtaining a Security Level (13), not required with a Tuner Dongle. If an invalid password is attempted 3 times or Cancel is selected, you will be defaulted to the lowest Security Level (same as having just a Tuner Dongle). Additionally, you may be prompted for a Station File password or Tuner password. If an invalid password is attempted 3 times or Cancel is selected, the program will end.



4.3 Selecting a Station File

If the Tuner Station Files window is displayed, select the desired Station from the list. Clicking Select or double clicking the Station File name, will select the highlighted Station File. Clicking Cancel will end the program. After selecting the station file, Tuner may prompt for another password to be entered (see section 4.2).



4.4 Data Entry Window

If the Tuner Data Entry window is displayed enter in appropriate text for each field in the “Enter in data to proceed” Text must be entered into each field to continue. Clicking Exit will end the program. Clicking Start will close this window and open the Select Process window or the next Tuner window where the first Process will execute.

Tuner Data Entry

Enter in data to proceed:

Enter Employee ID Number
654321

Enter Vehicle Serial Number
883V2AA5

Enter Production Order Number
PO-135-2009-456

Exit Start

4.5 Selecting a Process

Based on security levels and Station Files provided, the Select Processes window may or may not be displayed. If displayed select which Process or Processes to execute with Tuner. Double clicking a selection toggles the Status.

Select Processes

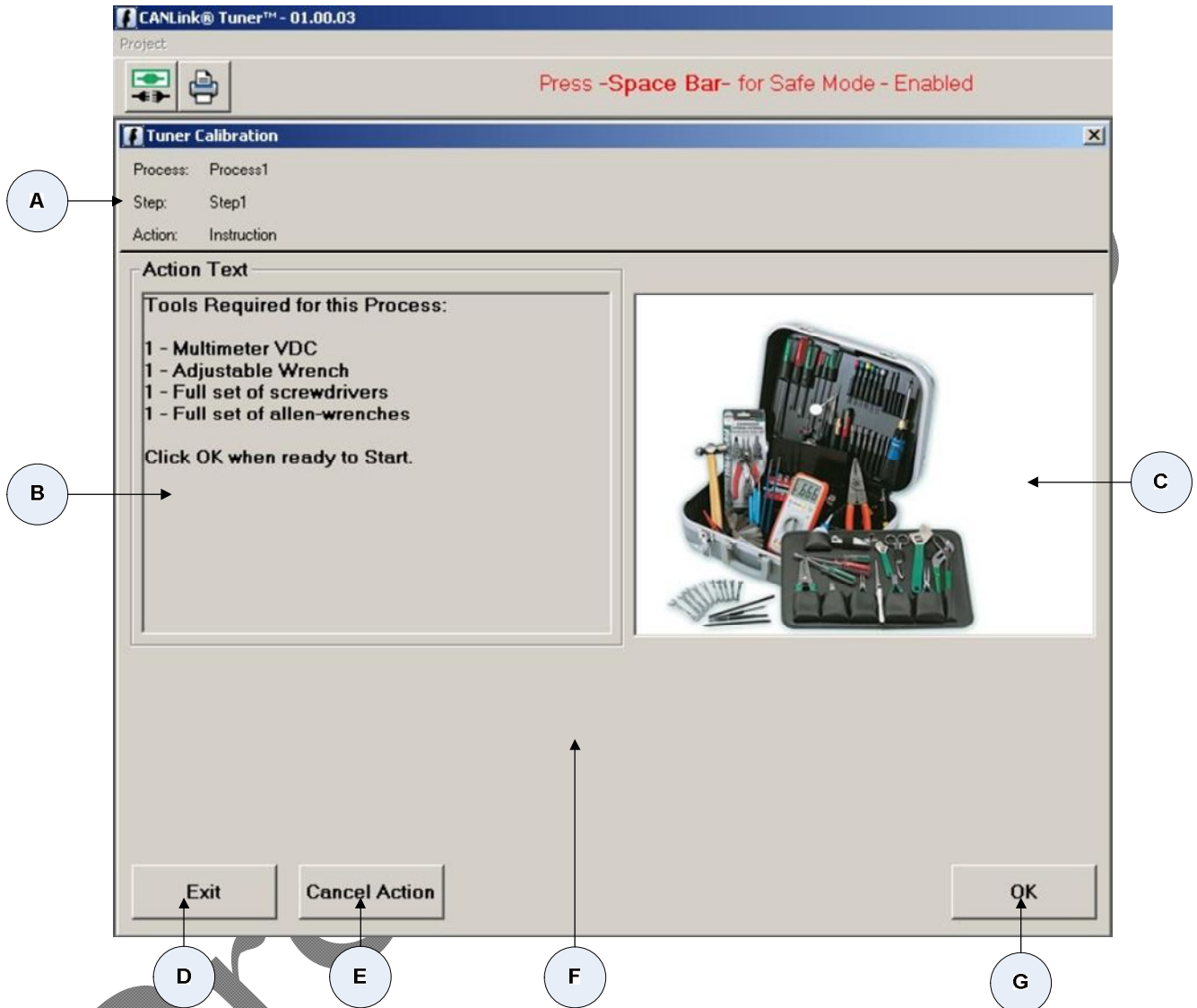
#	Name	Status
1	Process1	Selected
2	Process2	Not Selected

Double Click to change Selected Processes (can not change Required items).

Cancel OK

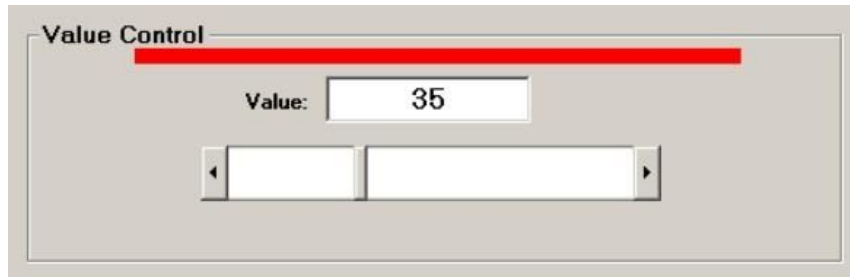
4.6 Tuner Screen

Once the first Tuner Process begins, the first action will be displayed and a screen similar to the following.



- A) This lists the names of the current Process, Step and Action that are executing or ready to execute
- B) If provided for this Action, instructional, informational or warning text will be displayed here
- C) If provided for this Action, an image will be displayed here.
- D) Exit – clicking this button will stop the Action and disconnect (stop communications) with the Module and will be recorded in the log file.
- E) Cancel Action – clicking this button will stop the Action and will be recorded similar to failing an Action. The text on this button will then change to “Restart Process”.
- Restart Process – clicking this button will restart the current Process from the very first Action of the very first Step. The text on this button will then change to “Cancel Action”.

- F) If provided for this Action, this area is where all end user controls current Action data and/or indicators will be displayed. Example shown here:



- G) Next Button – clicking this button, no matter what text is displayed on it, will continue on to the next Action if the current Action passes. This button may be grayedout for a set time period. After that time period expires, the button will be enabled and ready to be clicked at the end user’s discretion.

4.7 Processes Complete

After successfully completing the final Action of the final Step for the final Process, the following window will appear. After clicking the OK button on this window, the connection will close automatically.

